

COURTYARD VILLA



The 4-bed Courtyard Villa offers 348m² of internal space, a private courtyard, a private swimming pool and a fabulous roof terrace.

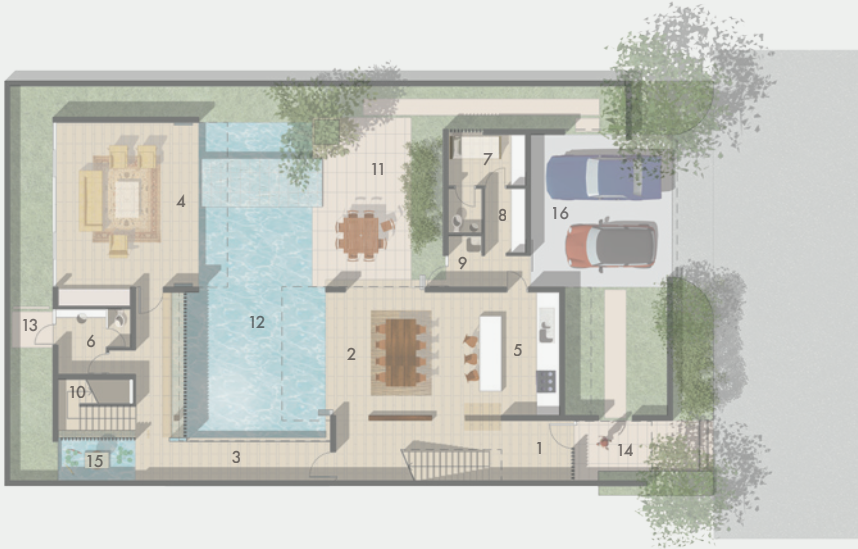
The Villa consists of two buildings which are separated by a private courtyard and pool. The buildings are linked together by covered walkways.



Dine and socialize in the open plan kitchen, or entertain guests in the living area across the courtyard.

Fully appreciate indoor/outdoor tropical living by folding open the floor to ceiling glass doors.

Ground Level



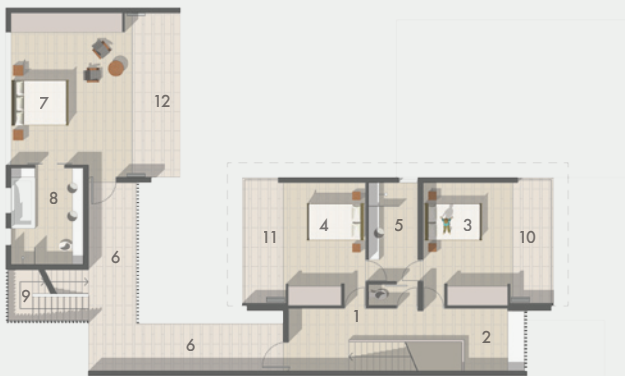
Indoor

1	Lobby	25m ²
2	Dining	34m ²
3	Gallery	24m ²
4	Living	38m ²
5	Kitchen	16m ²
6	Bathroom	6m ²
7	Maid	9m ²
8	Store	5m ²
9	Laundry	5m ²
10	Stairs	7m ²

Outdoor

11	Terrace	45m ²
12	Swimming Pool	58m ²
13	Outdoor Shower	4m ²
14	Covered Entry	8m ²
15	Reflection Pond	7m ²
16	Covered Garage	36m ²

Level One



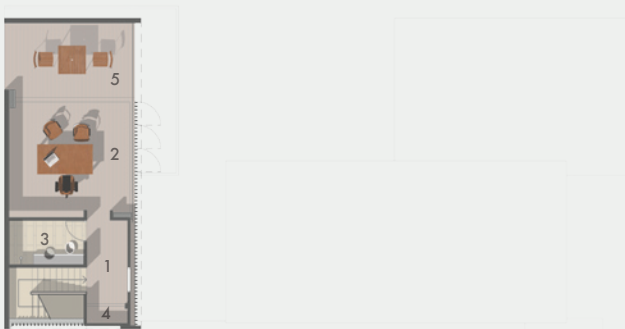
Indoor

1	Gallery 1	12m ²
2	Study	6m ²
3	Bedroom	17m ²
4	Bedroom	17m ²
5	Bathroom	10m ²
6	Gallery 2	24m ²
7	Master Bedroom	35m ²
8	Ensuite	12m ²
9	Stairs	7m ²

Outdoor

10	Balcony 1	9m ²
11	Balcony 2	9m ²
12	Balcony 3	13m ²

Level Two



Indoor

1	Gallery	8m ²
2	Bedroom/Study	23m ²
3	Bathroom	6m ²
4	Storage	2m ²

Outdoor

5	Terrace	18m ²
---	---------	------------------



INDOOR TOTAL _____ 348M²
 OUTDOOR TOTAL _____ 207M²